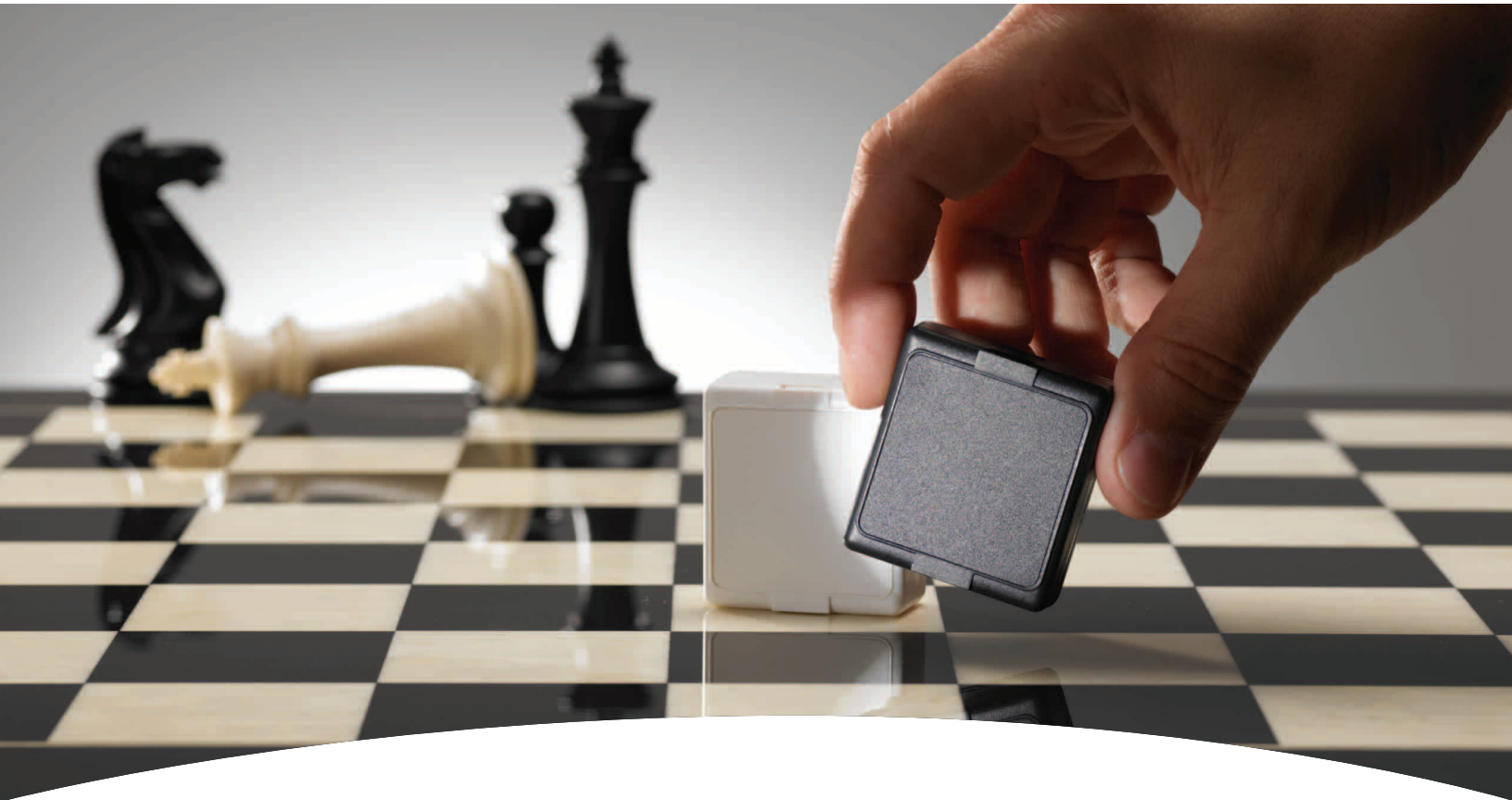
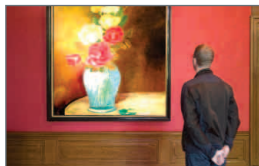


# smart move



## **Honeywell's 5870API Wireless Indoor Asset Protection Sensor...the Strategic Way to Win New Business.**

Thanks to Honeywell's 5870API, being in the asset protection business is now as easy as installing any 5800 Series wireless sensor! The easy-to-install device affixes to virtually any valuable requiring protection within a home or business, including paintings, flat screen TVs and other electronics, family heirlooms, safes, office equipment and more. You'll find the breakthrough product to be an excellent way to win new business, reduce attrition and add more content per sale by providing your customers with a unique and practical solution for asset protection.



By strategically selling the concept of movement-based asset detection, you'll add value to each and every installation while differentiating yourself from the competition. Are you ready to steal a share of the marketplace? It's your move.

## **Honeywell**

For additional information, please call **1-800-467-5875** or visit [www.honeywell.com/security/hsc](http://www.honeywell.com/security/hsc)  
The 5870API is compatible with Honeywell's Total Connect remote services and is available in dark grey and white.

© 2009 Honeywell International Inc. All rights reserved.